

WATCH THIS PRESENTS

*A FUNNY THING HAPPENED ON THE WAY TO
THE FORUM*

RELAXED PERFORMANCE GUIDE

Wednesday 13th September at 7:30pm



A FUNNY THING HAPPENED ON THE WAY TO THE FORUM

RELAXED PERFORMANCE GUIDE

A Funny Thing Happened on the Way to the Forum – **Relaxed Performance**

Time & Date:	7.30pm, Wednesday 13 September, 2023
Venue:	Chapel Off Chapel, 12 Little Chapel Street, Prahran
Arrival time:	30 minutes before the performance commences
Run time:	2 hours plus 20 minute interval
Quiet Space:	The Loft

TABLE OF CONTENT

Relaxed Mission	Page 3
How to get to the venue	Page 4
Accessibility	Page 5
Venue and Stage	Page 6
Actors	Page 8
Content Warnings	Page 9
List of Forum Songs	Page 11
About Us and Contact	Page 12

RELAXED MISSION

What is a relaxed performance?

Watch This acknowledges that audiences are not a monolith; one's ability to absorb, process and leave a show is not something that can be assumed to be uniform.

This relaxed performance will be accessible by audience members who prefer a more relaxed environment including but not limited to people with autism, neuro-diverse people, people with a disability, people with anxiety and others with sensory sensitivity.

What does it mean for you?

As part of this performance, certain visual and audio elements will be reduced, and house lights will remain on.

There will be a dedicated quiet space available for those who need to take time out from the performance. The Loft is a soft lit space with theatre style seating. There will be staff available to guide people to this area.

We have an open door policy so audience members can come and go throughout the performance as they require.

The audience capacity will be capped at 70% for this performance, allowing people to have space. Audience members are free to stim during this performance.

The artistic integrity of the production will not be compromised so all audiences can enjoy this performance. This performance contains all of the same story, music, actors, set and costume design of the original show, making some alterations to the aesthetic and movement.

Stim and Sensory filtering devices

Audience members are invited to bring stim and sensory filtering devices into the performance area and the quiet space (The Loft).

HOW TO GET TO THE VENUE

TRAM

Chapel Off Chapel can be reached by taking tram routes 72 along St Kilda Road to Malvern Rd or 78 along Chapel St, to the corner of Commercial Road and Chapel Street.

TRAIN

The closest train station is Prahran Station on the Sandringham line; it is an 8 minute walk to the venue. (See map below for directions to the venue from the train station.)

BUS

Chapel off Chapel can be reached by bus lines 246 and 604.

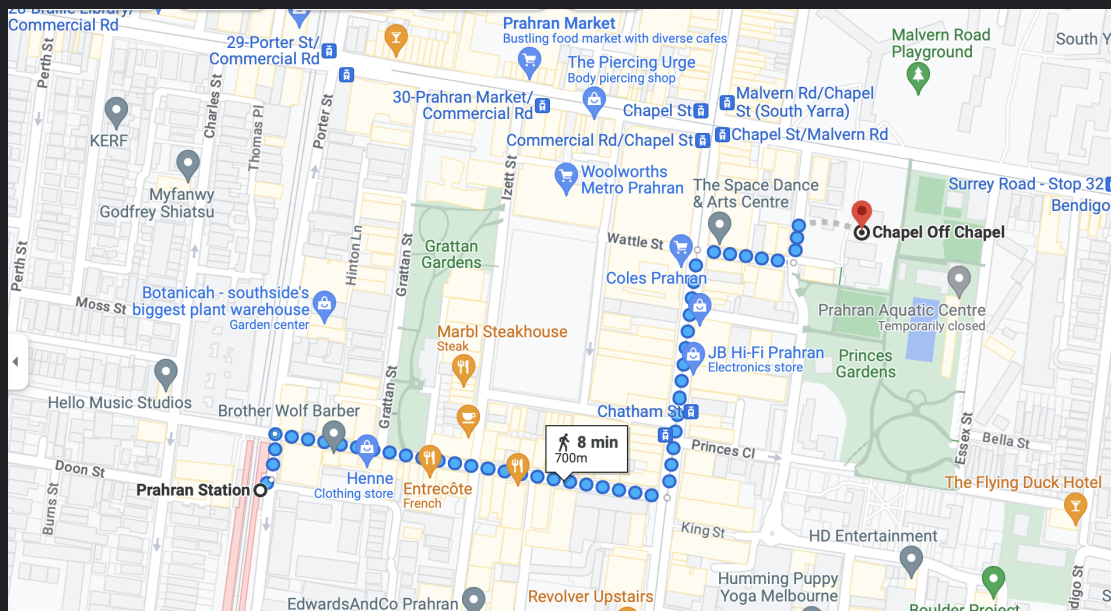
PARKING

Limited parking is available at Chapel Off Chapel - including accessible parking for people with mobility issues. Alternatively ample parking is available at the Prahran Square Car Park (30-40 Izett Street, Prahran). It has 24 hour access and hourly rate is \$1.70 - \$15.40.

BIKE RACK

A bike rack is also available outside the venue entrance.

MAP *Prahran station to Chapel off Chapel (8 minute walk)*



DIRECTIONS TO CHAPEL OFF CHAPEL FROM THE PRAHRAN STATION

Head northeast towards Porter Street
Slight left onto Porter Street
Turn right onto Greville Street
Turn left onto Chapel Street
Turn right onto Carlton Street
Turn left onto Little Chapel Street

The destination will be on the right; Chapel off Chapel (12 Little Chapel Street, Prahran)
Map link - <https://goo.gl/maps/rw41Ye3v15RDGLmg6>

ACCESSIBILITY

Please call Chapel Off Chapel's Box Office on (03) 8290 7000 (10am – 4pm, Monday to Friday) – if you have a wheelchair, hold a Companion Card or have any other specific access requirements.

Facilities for wheelchair access and seating that allows more room for the use of mobility aids are available in both The Chapel and The Loft for all performances (subject to availability).

Entrance doors are fully accessible to wheelchair users and mobility aids.

HEARING LOOP

A hearing system is available at Chapel Off Chapel – in The Chapel and The Loft. The system provides coverage to patrons wearing headphones or neck loops which are available from the Box Office. There is no extra charge for this service, simply ask the Box Office team for assistance when you arrive.

VENUE AND STAGE

SEATING & ARRIVAL

Seating is allocated but please arrive at least 30 minutes before the performance commences.

LAYOUT

The entrance leads to the main foyer of Chapel Off Chapel, to the left is the Chapel, which is the performance stage, and to the right of the entrance is The Loft.

TOILETS

All toilets are in the corridor at the end of the bar, on the right hand side.



Chapel Off Chapel
Outside the Venue



Chapel Off Chapel
Entrance to the foyer



Chapel - Main Stage
Accessible areas
indicated



Main Stage - set design



In

Chapel Off Chapel
The Loft - Quiet Space
In addition to the ranked
seating, tables and
chairs will be available.

ACTORS



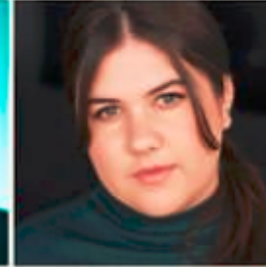
Pseudolus
Charmaine Gorman



Hero
Milo Hartill



Hysterium
Jacqui Hoy



Philia
Mel O'Brien



Domina
Sophie Weiss



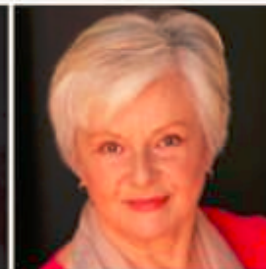
Miles Gloriosus
Luisa Scrofani



Senex
Cathy Woodhouse



Marcus Lycus
Sarahlouise Younger



Erronius
Judith Roberts



Ensemble & Courtesans
Kristie Nguy

PRE-SHOW SPEECH

Tom Middleditch from A_tistic will speak before the performance. Tom has provided technical and content advice for this relaxed performance and input into this guide.

CONTENT WARNINGS

CONTENT	DESCRIPTION
Depictions of slapstick (staged) violence	<p>Many characters slap, kick, and punch each other during conflict. This is highly choreographed, and executed in a very slapstick manner. (Slapstick - comedy based on deliberately clumsy actions and humorously embarrassing events)</p>
Depiction of weapons use	<p>Both the Soldier and Miles pretend to use swords when fighting or threatening other characters.</p> <p>Miles, preparing to kill Pseudolus with his sword, orders a soldier to gag Pseudolus. Miles accidentally hits his soldier instead as Pseudolus escapes.</p>
Suggested prostitution	<p>Marcus Lycus is known for his “house of courtesans” - prostitutes. In Scene 5 (“The House of Marcus Lycus”), he parades a line of potential courtesans for Pseudolus to purchase.</p> <p>Hero tells Pseudolus that he is in love with a girl from the house of Lycus. When Pseudolus explains to Hero that he could never afford a courtesan from the house of Lycus, Hero announces that he would give anything for this girl.</p> <p>Philia again appears at the window; Hero points her out to Pseudolus as the one they are seeking. Pseudolus asks Lycus about her, and Lycus explains that she has already been sold to Miles Gloriosus, a great captain who is coming later in the day to claim her.</p>
	Page 9

Depicted corpses	Pseudolus also asks Hysterium to lie on a bench with their arms crossed, and pretend to be dead so that Miles will leave. Pseudolus pretends to be dead from taking a potion; he shares beforehand that it will all be a ruse.
Sexual content / sexualisation	Kissing between Phillia and Hero Sexual innuendos - spoken jokes, and suggested movements.
Depictions of sexual harassment	Miles - as a character - but mostly his song Lyrics: - lands to conquer, cities to loot, people to degrade - bring me my bride - my lust for her no longer can be denied - “there are...women to abuse” - degrader of the Greek Sennex - towards “the maid” (Philia)
Mention of suicide	An angry Miles is again about to kill Pseudolus, who asks to be allowed to kill himself. He tells Hysterium to bring him what he thinks is the sleeping potion; Hysterium, however, brings him the passion potion. Pseudolus pretends to be dead, but the potion energizes him.

LIST OF MUSICAL NUMBERS/SONGS

ACT ONE

1. Overture
2. Comedy tonight
3. Love I Hear
4. Free
5. The House of Marcus Lycus
6. Lovely
7. Pretty Little Picture
8. Everybody Ought To Have a Maid
9. I'm Calm
10. Impossible
11. Bring Me My Bride

ACT 2

12. That Dirty Old Man
13. That'll Show Him
14. Lovely - Reprise
15. Funeral Sequence
16. Finale

ABOUT US AND CONTACT

Watch This is Australia's first and only Stephen Sondheim repertory company, a bold, grass-roots organisation presenting outstanding, sophisticated musical theatre to audiences in Melbourne and regional Victoria. Our ambition and commitment to the highest production/performance standards attract teams of wonderfully talented artists and creatives.

Since 2013, we have presented nine productions (including regional tours) of Sondheim's works including *Sunday In The Park With George*, *A Little Night Music*, *Merrily We Roll Along*, *Company*, *Pacific Overtures*, *Assassins* and *Into The Woods*. Our acclaimed productions have received 27 Green Room Award nominations and 4 wins.

We are passionate about creating exciting, immediate theatrical experiences for theatre-goers. We are also committed to ensuring that these experiences are available to as many people as possible.

If you wish to know about our Company and previous productions, please visit our website. www.watchthis.net.au

CONTACT

Please feel free to contact Watch This with any questions prior to the performance.

We also welcome any comments or feedback following the performance that may assist us for future relaxed performances.

Please email watchthis223@gmail.com if you wish to contact us.